



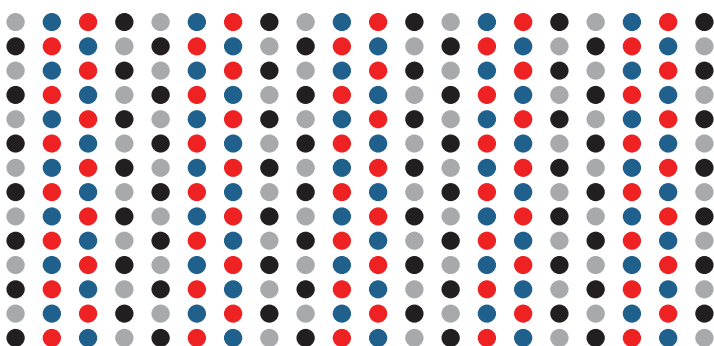
*A practical and useful tool for  
everyday work*

Wiki

---

With our tool you can interact with your peers by starting a discussion or participating in the existing ones, adding information, modifying the published content, uploading files or creating new pages.

---



## Who can use the Wiki?

The **Wiki** is available for all the users and research communities that are part of the NRENs connected to RedCLARA and have registered at **colaboratorio.redclara.net**. This service, as well as the others available in Colaboratorio, can be integrated to the websites of the Latin American and European networks.



## How to use the Wiki?

- 1 **Login in RedCLARA's Colaboratorio**, click in "Communities" and select the one you want to collaborate with.
- 2 Through the description bar, **enter the Wiki**.
- 3 Using the option "Tools" and "Upload file" you can **explore the content posted and contribute**.
- 4 You can include documents to the **discussions by uploading them to the academic cloud**. Some of the formats supported are: jpg, doc, pdf, ppt and zip.

*More collaboration,  
better communication*

Get more information about the Wiki from the service video:  
[elcira.redclara.net/tutorials.html](http://elcira.redclara.net/tutorials.html)